

How to determine the mapping of the Athena USB COM Port in Windows XP.

Introduction

Communication to the Athena audio matrix mixer with a PC is required for configuring the device. The Athena matrix mixer has a built-in USB to Serial adapter. This adapter requires the installation of PC system drivers. During this installation, Windows XP will assign this device to a virtual COM Port. In order to communicate between a PC and the Athena matrix mixer the virtual COM Port must be determined.

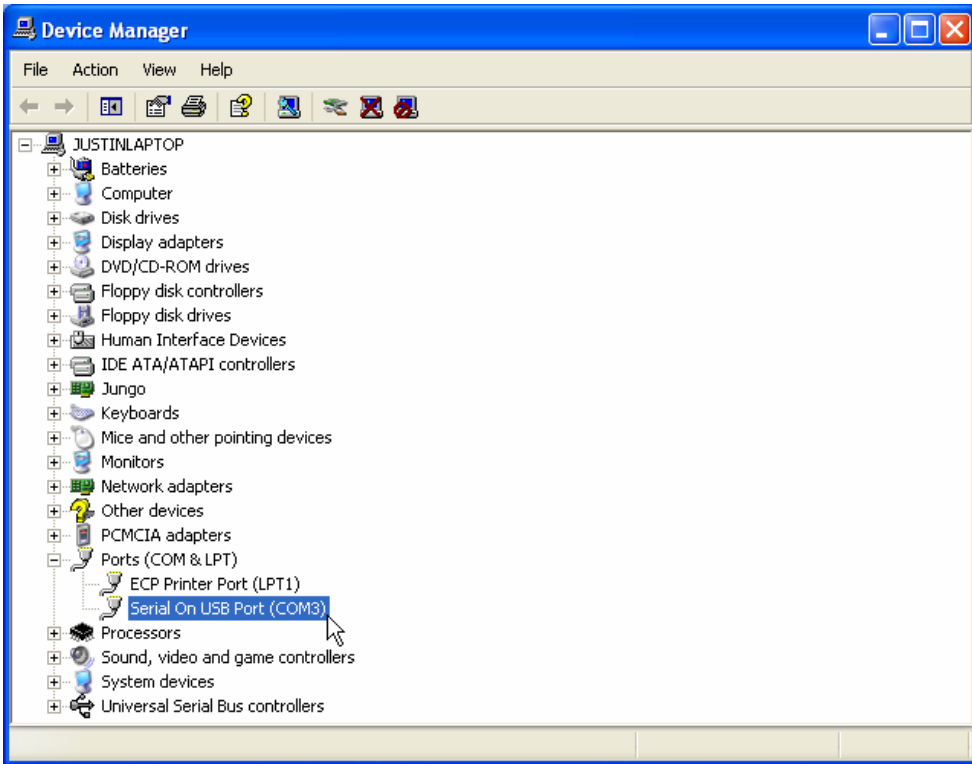
Instructions

Difficulty: Low

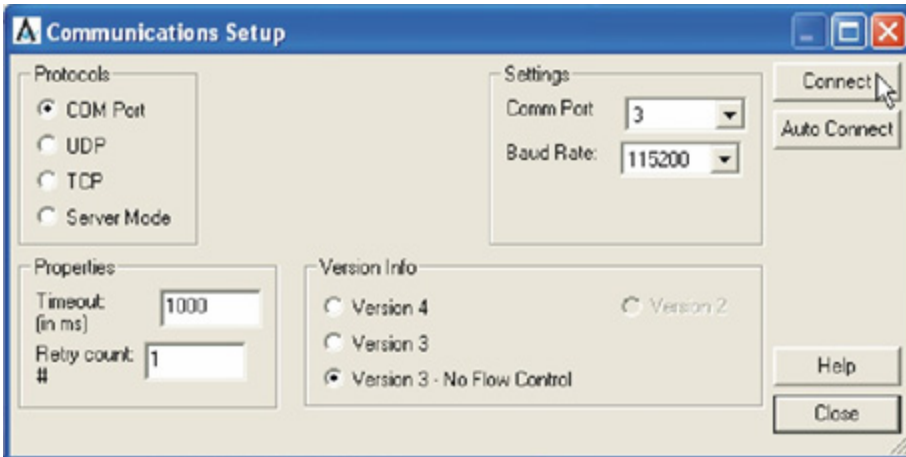
1. **Install Intelix Athena software.** From the Athena CD provided with the hardware or from www.intelix.com, run the Athena software setup.exe as well as the USB driver setup.exe and follow the on screen instructions.
2. **Confirm the virtual COM Port assigned in the Device Manager screen of the PC.** From the desktop, click **start, Control Panel**. In the Category View, click **Performance and Maintenance**. On the lower right side of the screen, click **System** to open up the **System Properties** screen. Now click on the Hardware tab and select **Device Manager**.

For a shortcut, on a standard keyboard, press and hold the **Windows key and **Pause Break** at the same time this will open the **System Properties** screen.*

The **Device Manager** screen will display a list of devices for the PC. Towards the bottom of the list, expand the title “Ports (COM & LPT).” The device listed as “Serial on USB Port (COM3)” is the USB to serial adapter inside the Athena chassis.



This is the COM Port that must be selected in the Athena software for communicating to the Athena hardware. In this example, it is COM 3.



Changing the Virtual COM Port. To change the Virtual COM Port, double-click on “Serial On USB Port (COM3).” This will open the Properties for the Serial on USB Port device. Click [Advanced](#) and this will display the advanced settings for COM 3. At the bottom of the screen is will display the current COM Port Number assigned to the device. Click the drop down and select the desired COM Port Number.

