



Instructions to Flash Upgrade the Intelix E Series Matrix Mixer

Before proceeding with the Firmware upgrade be sure to backup the current configuration in your Intelix matrix. Intelix recommends you save this file to your desktop. You will be required to load this configuration back into the unit after a firmware upgrade.

In order to flash a different firmware update to your Intelix E Series matrix mixer, please perform the following steps:

- 1) Download the current Intelix M Series E Designer software from the online Intelix Technical Library.
- 2) Download the current Embedded Firmware for the Intelix matrix mixer you wish to update.
- 3) Install the M Series E Designer software.
- 4) Execute the M Series E Designer software.
- 5) Once the program has loaded:
 - a. Open the Diagnostics menu.
 - b. Select Communication Diagnostics.
 - c. Establish a connection to the matrix.
 - d. Once the connection has been made, select Upgrade Flash from the Options menu. See *Figure 1*.
 - e. Select the *.s19 file for upgrade.
 - f. Click Open. See *Figure 2*.



#147 Flash Upgrade

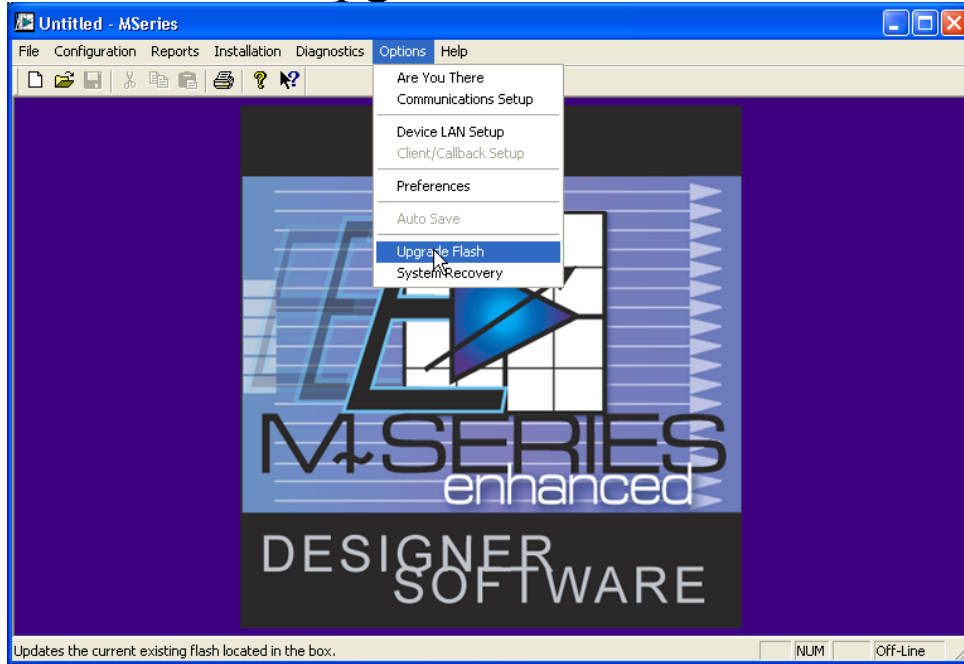


Figure 1

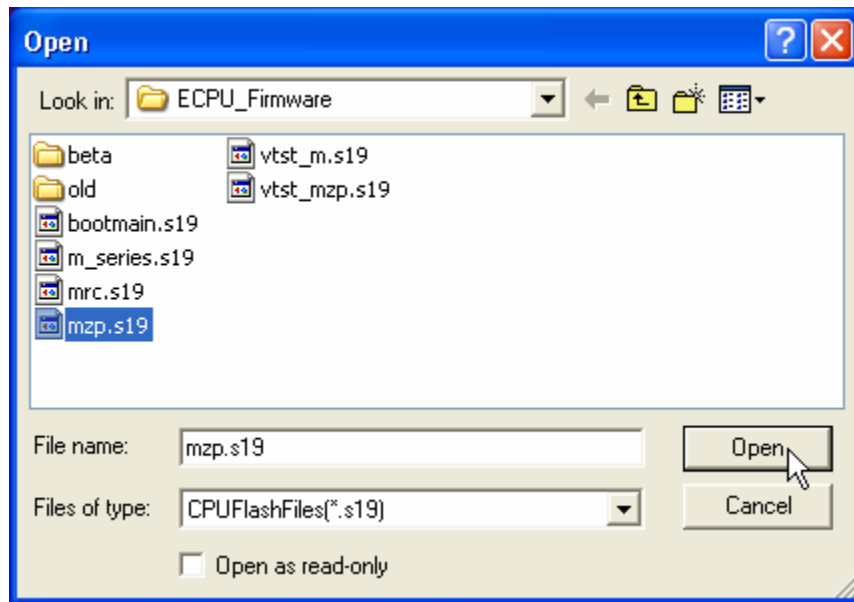


Figure 2

- 6) After clicking open, the upgrade process will begin. Please be patient while the information is loaded into the matrix. During the update you will see a screen similar to the one in *Figure 3*.

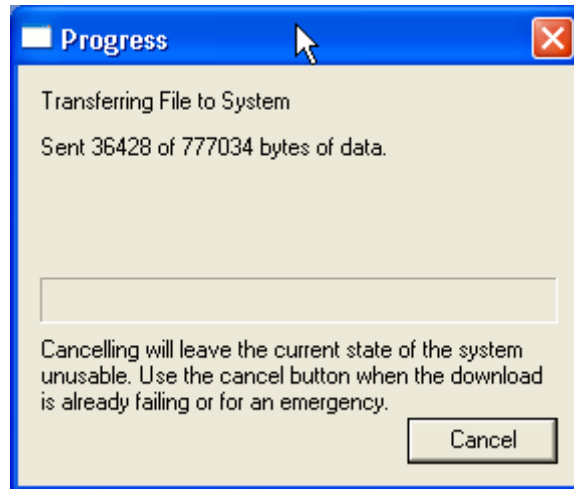


Figure 3

- 7) After all the information has been loaded to the matrix, complete a final verification to ensure a complete and proper upgrade has occurred (*Figure 4*).

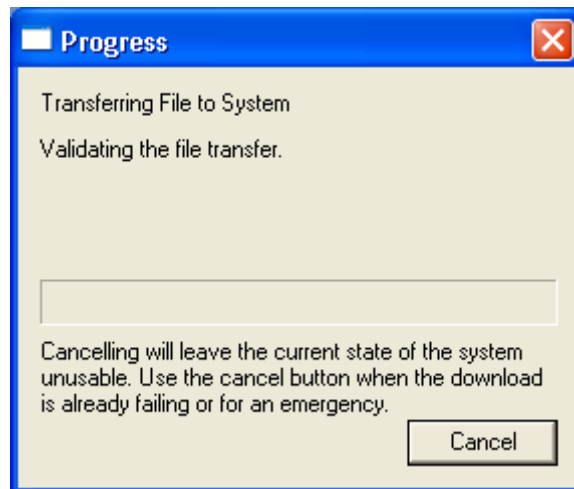


Figure 4

- 8) After the system has been updated, the screen in *Figure 5* will appear.
 - a. The screen on the following page will appear to explain that audio and configuration will be lost after clicking ok.
 - b. If connected through TCP/IP, a connection will be lost and static IP information will be lost. The system will reboot with default DHCP settings.
 - c. Click OK.



#147 Flash Upgrade



- d. After clicking OK, the screen in *Figure 6* will be displayed while the system is rebooting.

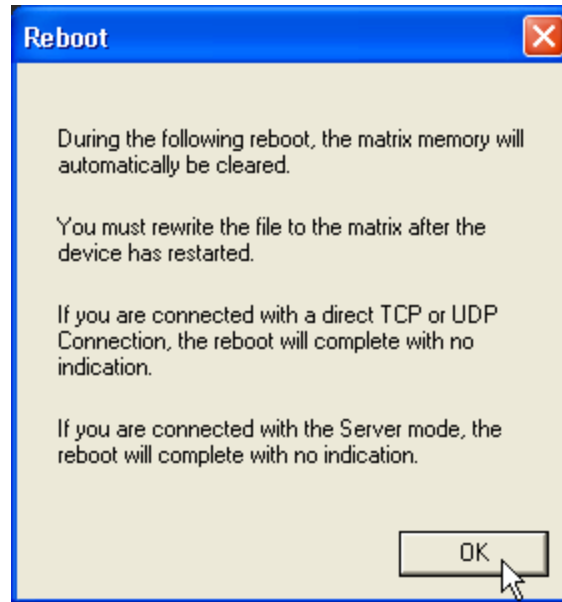


Figure 5

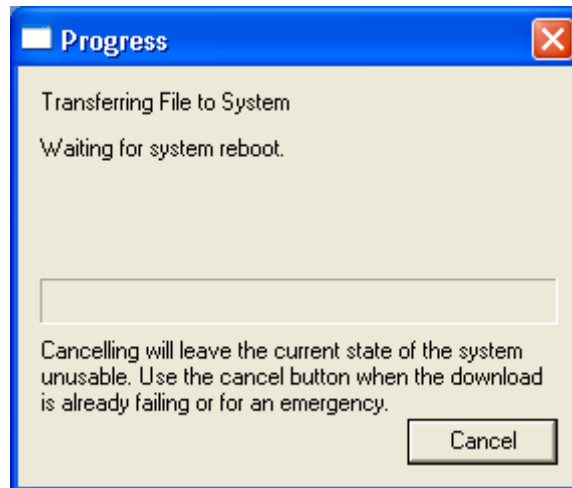


Figure 6

- 9) Close the M Series E Designer Software.
- 10) Open the appropriate software for the matrix being upgraded.
- 11) Rewrite the file to the matrix and reconfigure TCP/IP settings.