

Tech Note

TCP/IP Setup



[04/28/04]

Intelix E Series matrices, such as the M Series E, MZP E, and MARC E, support both DHCP and static IP.

DHCP

If the Intelix matrix is present on a network with a DHCP server, then the matrix will follow DHCP protocol to obtain an IP address from the DHCP server.

Static IP Setup

If the Intelix matrix is not on a network with a DHCP server or a static IP address is desired, follow the steps below:

1. Open the Intelix Designer Software for the desired product.
2. Select *Default File* or *Existing File*. The *Default File* selection opens a factory-created, default file which allows access to the various features in the software. The *Existing File* selection allows you to load a pre-creating Intelix software file. If no file has been created, you may need to create a *New File*.
3. From the *Options* menu, select *Connection Manager*.

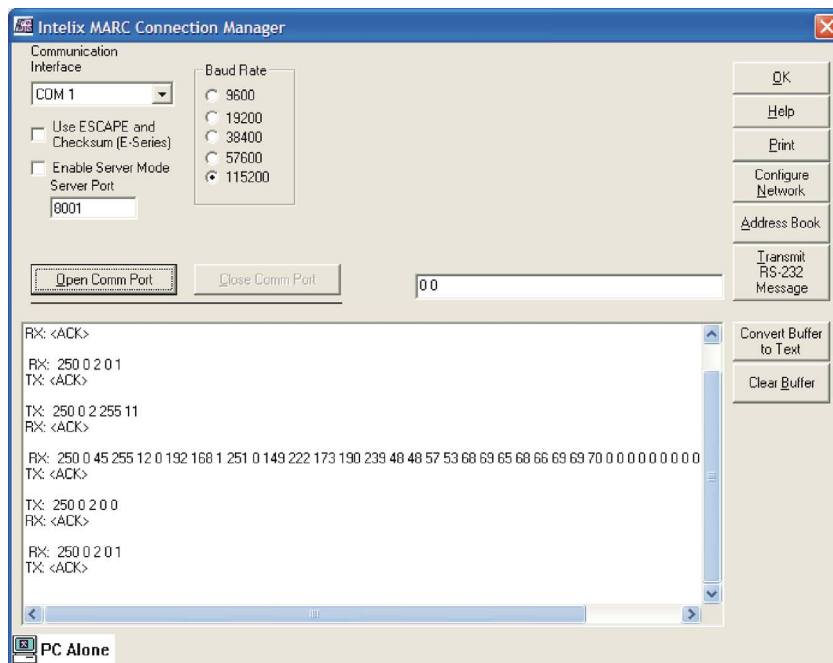


Fig. 1 MARC Connection Manager Screen Shot

4. Connect your PC to the physical matrix via an RS232 serial connection using a standard straight-through serial cable.
5. Select *Open Comm Port*.
6. Select *Configure Network*.
7. Uncheck *Use DHCP Server*.
8. Specify IP address.
9. Specify subnet mark.
10. Specify default gateway.
11. Select *Assign*.
12. Select *OK*.

The matrix has now been assigned a static IP address.

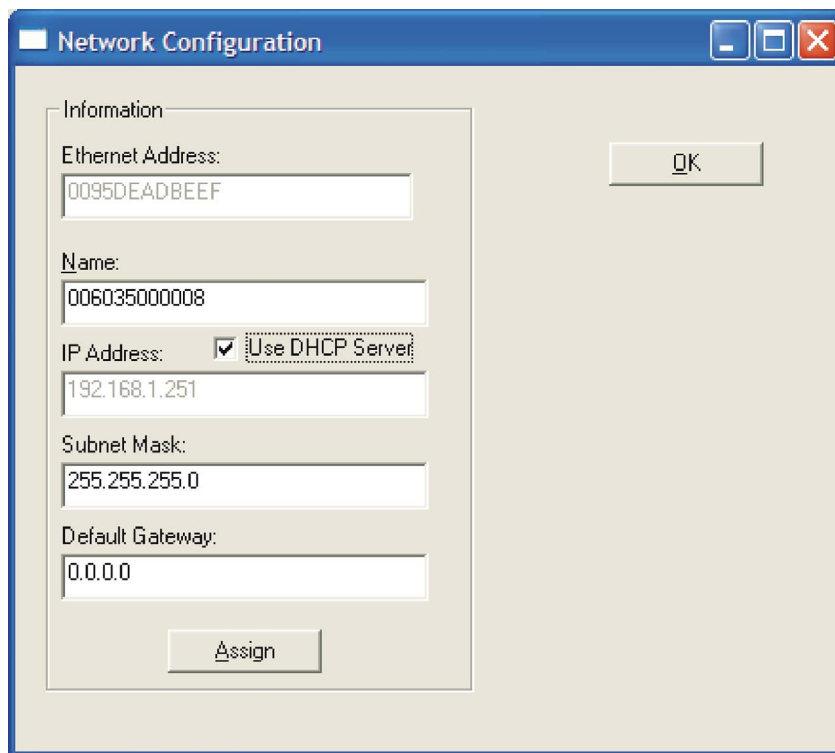


Fig. 2 MARC
Network Configuration
Screen Shot