

## Tech Note

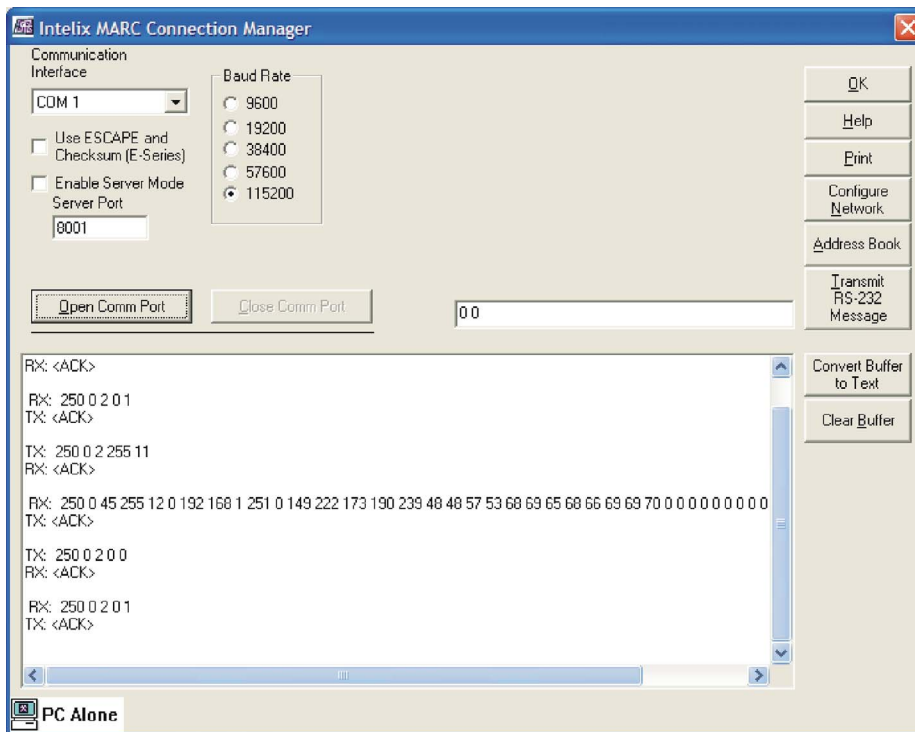
# TCP/IP Callout Setup Procedure



[06/01/04]

In order to establish a connection between Intelix Designer Software and Intelix M Series E, MZP E, or MARC E matrices, the TCP/IP Callout Setup Procedure may need to be performed as outlined below:

1. Open the Intelix Designer Software for the desired product.
2. Select *Default File* or *Existing File*. The *Default File* selection opens a factory-created, default file which allows access to the various features in the software. The *Existing File* selection allows you to load a pre-created Intelix software file. If no file has been created, you may need to select *New File*.
3. From the *Options* menu, select *Connection Manager*.



**Fig. 1** MARC Connection Manager Screen Shot

4. In the *Connection Manager*, verify the desired matrix's settings.
5. Select *Open Comm Port*.
6. Return to the main Intelix Designer Software window. From the *Options* menu, select *Client/Callout Setup*.
7. Enter the desired IP address and port number. Select *add*. For further information, refer to the IP address notes on the following pages.
8. Select *OK*. TCP/IP Callout Setup is complete.

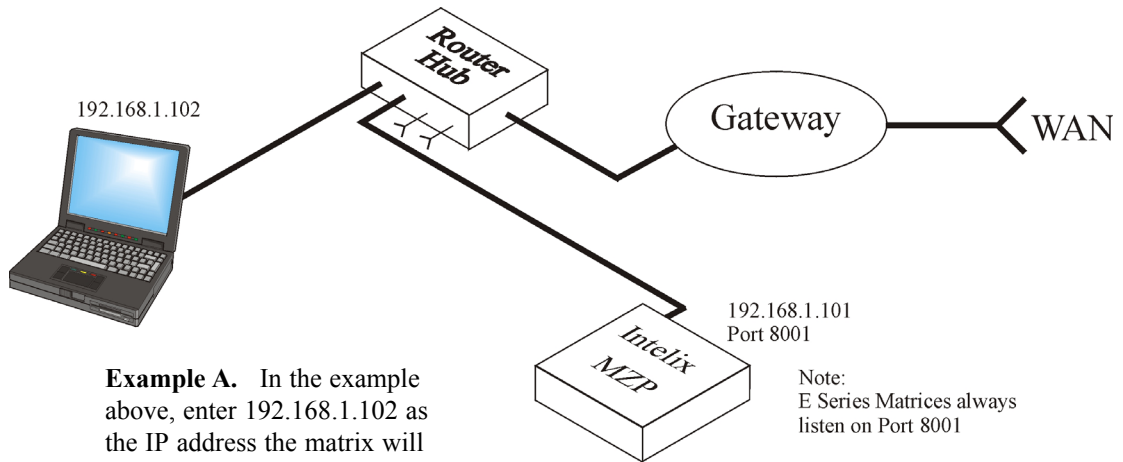
---

## IP Address Notes

Select your scenario from the three choices below.

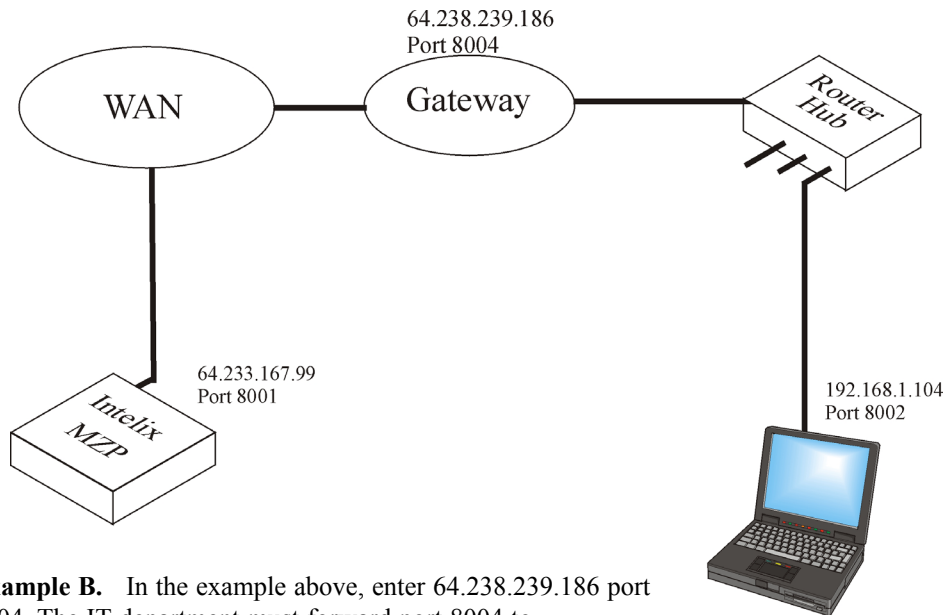
### A. Local Area Network

Enter the IP address of your computer and specify a unique port number which will be used for communication. The port number provided to the matrix at this point is the same port number specified in the *Connection Manager* when enabling listen mode.



### B. One Firewall, Two Local Area Networks

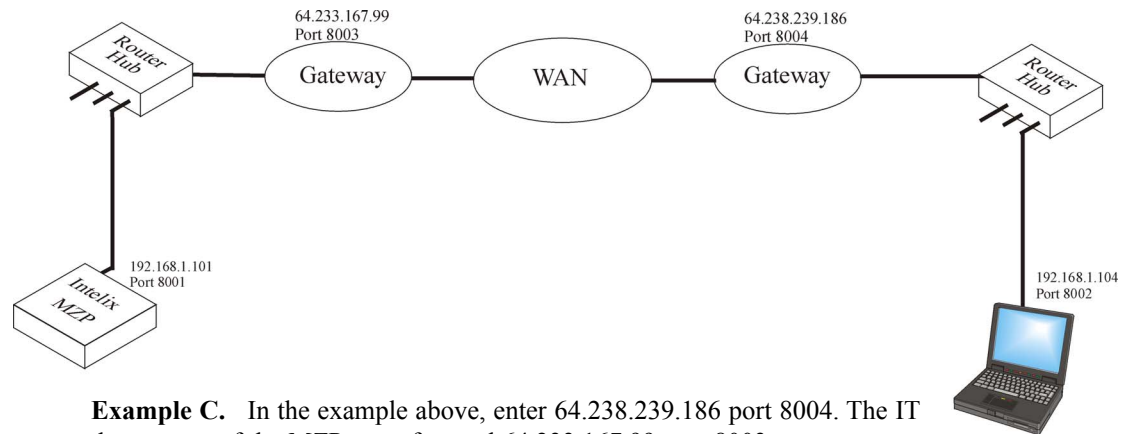
Enter the IP address of the network gateway and the port number given by the IT department personnel who manage your computer network. The IT department must forward the port number to your computer's local address on a unique port number. 8001 is the Intelix default.



---

### C. Two Firewalls, Two Local Area Networks

Enter the IP address of the network gateway and the port number given by the IT department personnel who manage your computer network. The IT department must forward the port number to your computer's local address on a unique port number. 8001 is the Intelix default.



**Example C.** In the example above, enter 64.238.239.186 port 8004. The IT department of the MZP must forward 64.233.167.99 port 8003 to 192.168.1.101 port 8001. The IT department of the computer must forward 64.238.239.186 port 8004 to 192.168.1.104 port 8002. The software will listen on port 8002 when enabling listen mode.