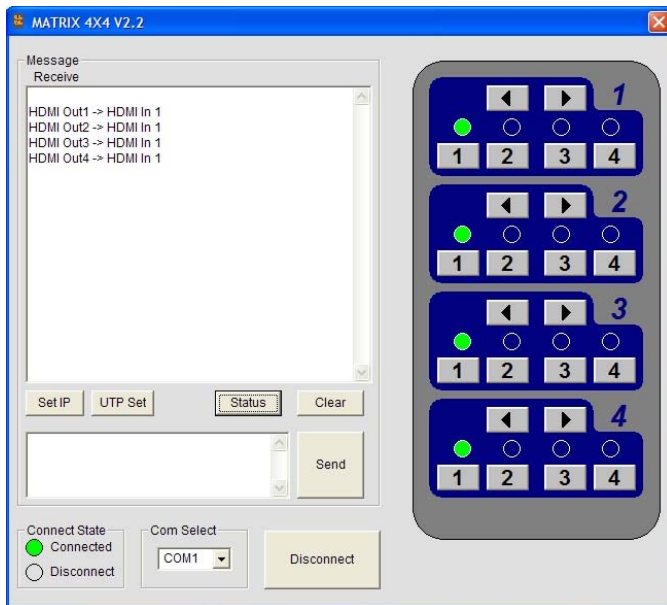


**Intelix Technical Bulletin:  
DIGI-HDMI-4X2 & DIGI-HDMI-4X4 V.2 Single UTP Extender Update Instructions  
Rev. 1008**

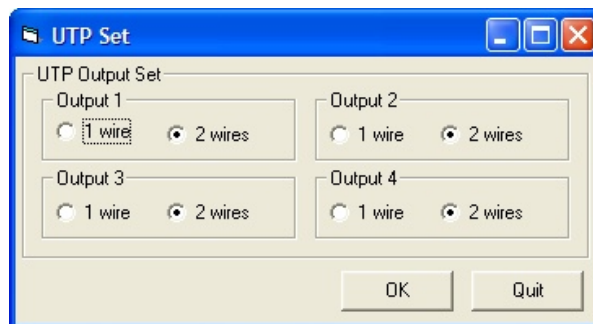
**Option 1: Toggling Single UTP Mode through Intelix Software**

Different modes of operation are toggled through Intelix *COMCTL* software. Please visit Intelix's online technical library to download the latest version of the software.

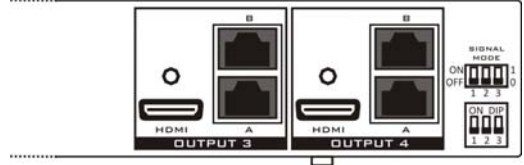
1. Download and install *COMCTL* software on your computer.
2. Connect your computer to the matrix using a serial or cross-over Ethernet cable.
3. Launch the utility and verify you are connected to the matrix. A successful connection will illuminate the *Connected* icon in the *Connected State* box.



4. Select the *UTP Set* button.
5. Select which outputs you wish to toggle.
6. Select *OK* to enable the changes.
7. Select *Quit* to exit the window.



**How do I know if this update applies to me?**  
Version 2 HDMI matrix switchers feature red DIP switches on the rear panel of the unit.



**Who should do this update?**  
This update applies to users desiring to use single twisted pair receivers (DIGI-HD-UHR2-R) with Version 2 matrix switchers.

**Intelix's Online Technical Library Link**  
[www.intelix.com/tech\\_library/software.htm](http://www.intelix.com/tech_library/software.htm).

### Option 2: Updating Matrix Firmware

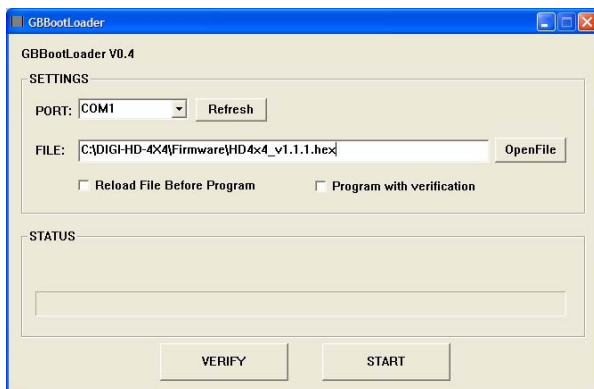
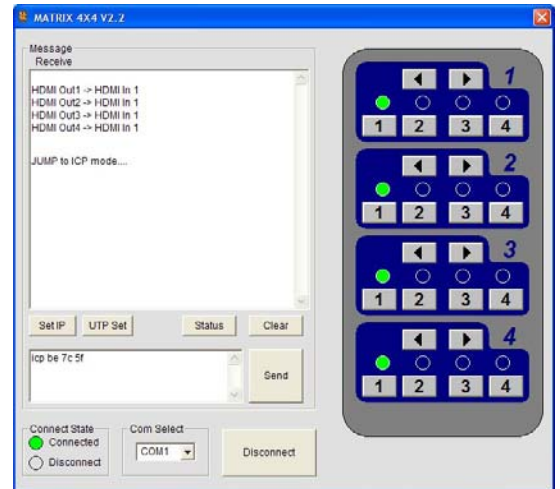
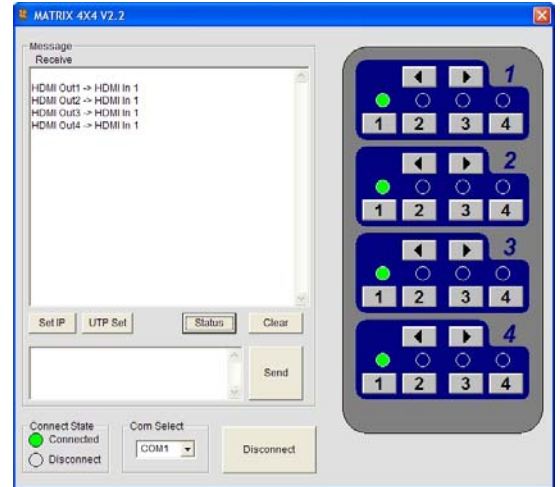
With a firmware update, Intelix HDMI matrices support single UTP mode toggling through the front panel buttons.

1. Download and install *COMCTL* and *UartBootLoader* on your computer.
2. Connect your computer to the matrix using a serial or cross-over Ethernet cable.
3. Launch the utility and verify you are connected to the matrix. A successful connection will illuminate the *Connected* icon in the *Connected State* box.
4. In the text field to the left of the *Send* button type:

icp be 7c 5f

Note that there is a space after the *5f*. Press *Enter* after the space. Press *Send*. *JUMP to ICP mode....* will appear in the message window. The matrix is ready for the firmware update.

5. Close the COMCTL software.
6. Open the UartBootLoader software.
7. Browse to the firmware location on your hard drive.
8. Click Start.
9. After the code has been written, close the UartBootLoader software. Your matrix is now ready for single UTP mode.



### Toggling Single UTP through the Matrix Front Panel

The default setting of the DIGI-HD-4X4 is double twisted pair mode. To switch the matrix into to single twisted pair mode, simultaneously press and hold the *Output 3* button and *Keylock* button for 3 seconds. The front panel LEDs will flash when the mode is engaged.

